

Pharmacy technicians working in Primary Care Networks

General Practice Alliance



Pharmacy technicians in different sectors



Technicians work across many different sectors, each bringing different set of challenges and require a variety of skills. Working in a GP practice is no different and will require all your skills and experience

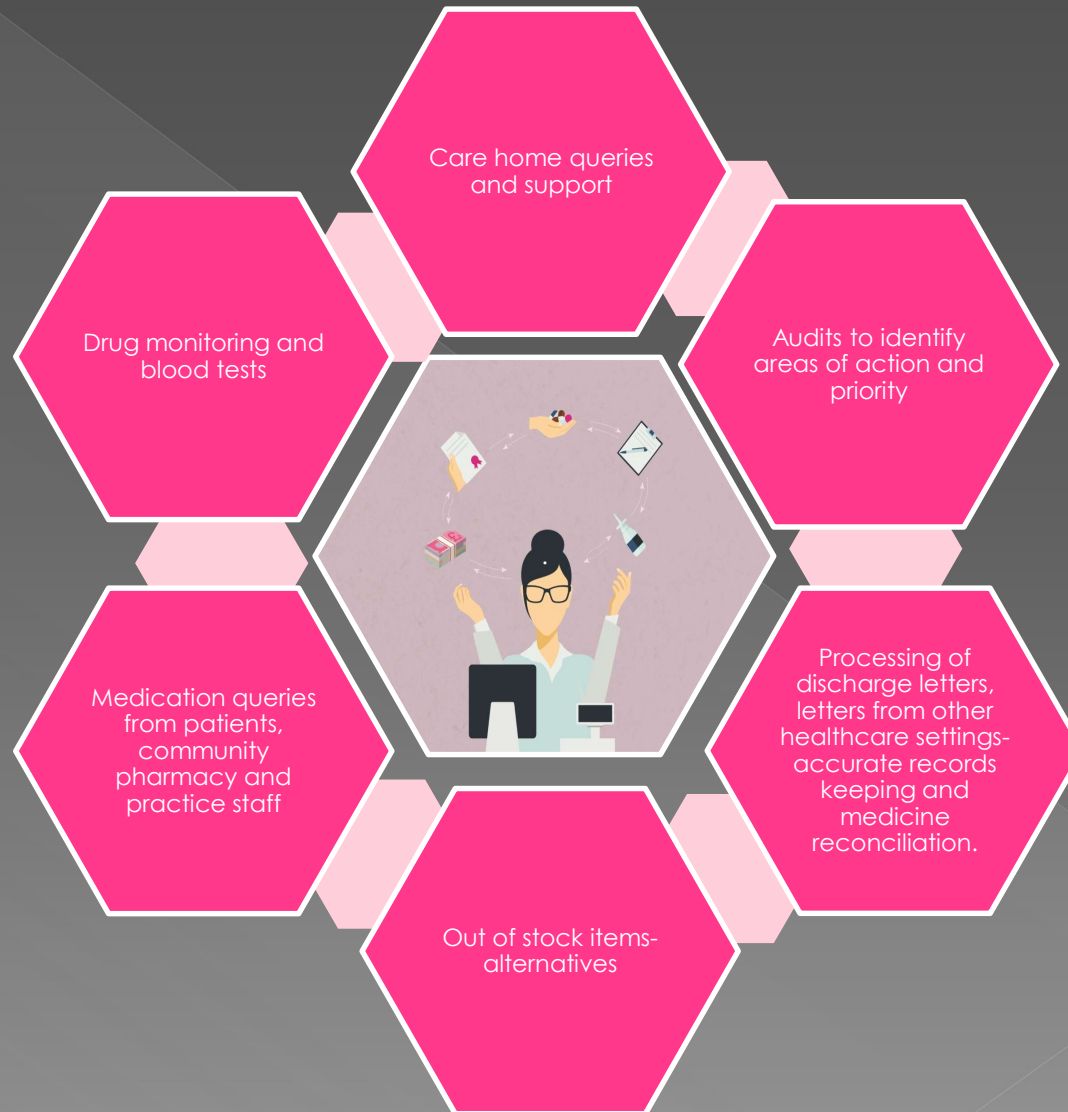


Pharmacy technicians in primary care with GPA

- General Practice Alliance (GPA) is our employer and is a GP Federation supporting many practice in the Northampton area
<http://www.northantsgpalliance.com/what-we-do/gpa-clinical-pharmacists/>
- This role is still fairly new and very much developing and so makes this a very exciting opportunity.
- Technician work is not just dispensing medication, although hugely important, we have the skills to allow us to do so much more.
Read on if your are still with us and interested...

What does the job involve?

Each day should bring you a great deal of variety:



Who will I be working with?



Clinical Pharmacy team:

- Each Primary Care Network (PCN) has at least two pharmacists in established roles for each of the PCNs. Each PCN has 4 or 5 GP surgeries
- Lead Clinical Pharmacist and a Senior Pharmacy technician supporting the whole pharmacy team

GP surgeries team:

- Includes GPs, and practice staff; managers, admin, Rx clerks, secretaries, nurses.

Wider teams:

- Community pharmacy, secondary care, care coordinators, SPLWs
- GPA team.

Where will I be working?



- We support and offer a good mixture of working in practice and working from home.
- You may work with one practice a day or perhaps split your day between practices, always within one PCN.
- We support flexible & part time working as long as the core hours of the surgery are covered.

Our PCNs

- ◉ Grand Union
 - > Abington Medical Centre
 - > Abington Park Surgery
 - > King Edward Road Surgery
 - > Leicester Terrace Health Centre
 - > Greenview Surgery
- ◉ Arc
 - > Danes Camp
 - > Rillwood
 - > Eleanor Cross
 - > Delapre
- ◉ MMWF
 - > Mounts
 - > Maple Access
 - > Weston Favell Plus
 - > Mayfield

Training, support and future development



- 15month training pathway with CPPE
Primary Care Pharmacy Education Pathway
is part of your contract.

<https://www.cppe.ac.uk/career/pcpep/pcpep-training-pathway>

The course is attended by both pharmacists and technicians together. Consists of study days, home learning, project work and support from a education and clinical supervisor.

- **GPA Clinical Team:** Pharmacist lead for the whole team and Pharmacy Technician line management for the Technicians.
- **Ongoing support** from Pharmacy colleagues and the wider GPA team as well as the Practice teams.
- **Lots of scope** to undertake projects, audits and learning.
- **Monthly clinical supervision** and **regular 1:1s** providing ongoing support and learning.

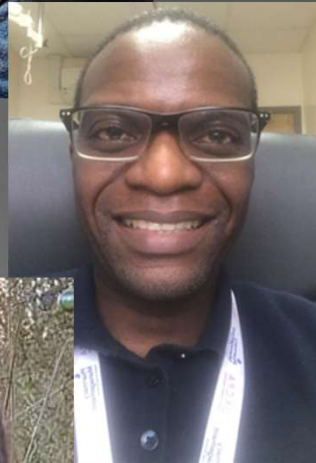
Further reading...

- ◉ Network Contract DES
www.england.nhs.uk/wp-content/uploads/2021/03/B0431-network-contract-des-specification-pcn-requirements-and-entitlements-21-22.pdf
- ◉ APTUK <https://www.aptuk.org/site/PCPT>
- ◉ PCPA <https://pcpa.org.uk/pharmacy-technicians-group.html>

Meet the team



Clinical
Pharmacists



Pharmacy
Technicians





- ◉ If you have any further questions, please do get in touch with:
- ◉ Philippa Jones, Senior Clinical Pharmacist
07708476743 philippa.jones10@nhs.net
- ◉ Zoe Webb, Senior Pharmacy Technician
07708473000 zoe.webb5@nhs.net